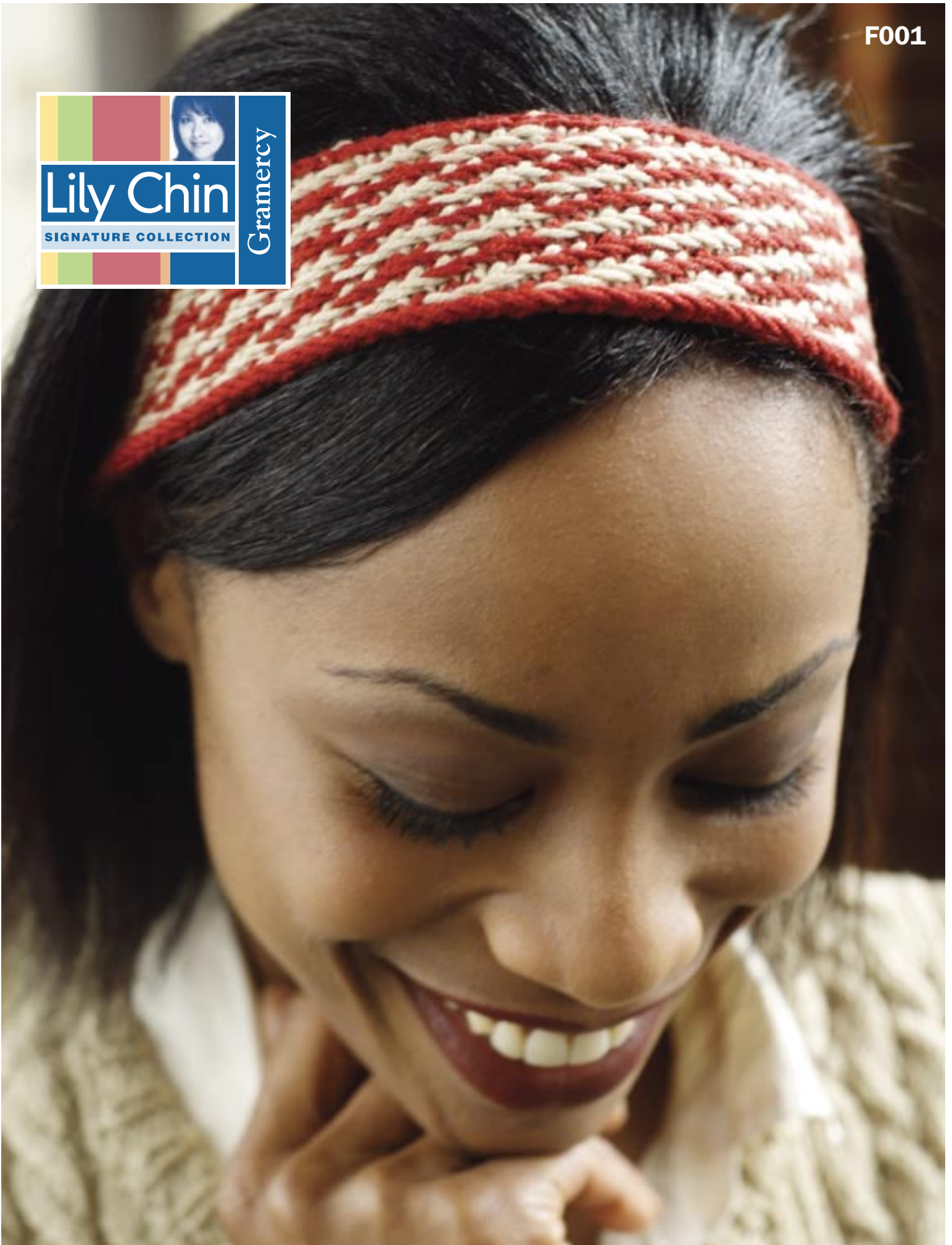




Lily Chin
SIGNATURE COLLECTION
Gramercy

The logo is a rectangular graphic with a blue background. It features a small portrait of Lily Chin in the top right corner. The text 'Lily Chin' is in a large, white, serif font, and 'SIGNATURE COLLECTION' is in a smaller, white, sans-serif font below it. The word 'Gramercy' is written vertically in a white, serif font on the right side of the logo. The logo is flanked by vertical bars of color: yellow, green, and red on the left, and blue on the right.



“Gramercy” Houndstooth Headband

Yarn

“Gramercy” pure merino wool, color Cranberry 3624 (C) and Tan 5099(T).

Needles

#8 or size needle to obtain gauge.

Size

to fit 20 (22, 24)” head.

Gauge

5.5 sts and 11 rows = 1” or 22 sts and 4 rows = 4” in pattern st.

Note

always slip sts as if to p. Keep color not in use loosely along side edge.

Houndstooth Pattern (worked over a multiple 4 plus 2 sts)

Row 1 [RS]- * k 1, sl 2 with yarn in front (wyif), k 1; rep from *, end k 2 more.

Row 2 [WS]- k 1, * sl 1 with yarn in back (wyib), p 2, sl 1 wyib; rep from *, end k 1.

Row 3- k 3, * sl 2 wyif, k 2; rep from *, end sl 2 wyif, k 1.

Row 4- K 1, * p 1, sl 2 wyib, p 1; rep from *, end k 1.

Rep rows 1 thru 4 for patt.

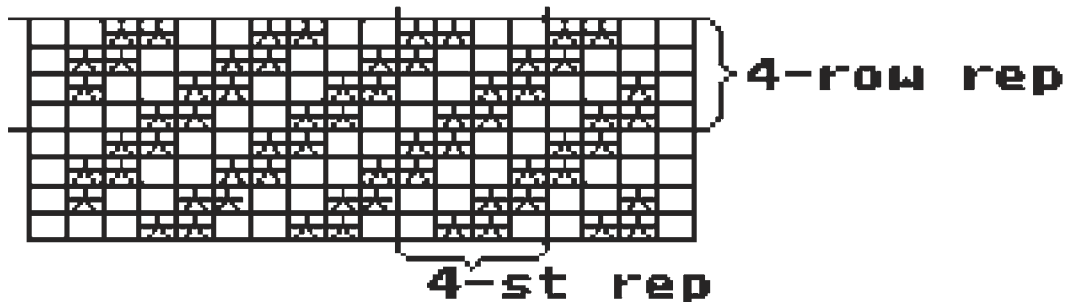
With C, cast on 110 (122, 134) sts. P one row across.

* Change to T and work rows 1-4 of pattern. Change to C and work rows 1-4 of pattern.

Rep from * until piece meas 3” high or 32 pattern rows total. End off T, bind off in k on RS with C.

Finishing

Seam side edge.



Abbreviations:

K = knit, P = purl; st(s) = stitch(es); dec= decrease, beg = begin(ning); CO = cast on.